

# FACTS

## ORGAN & TISSUE DONATION

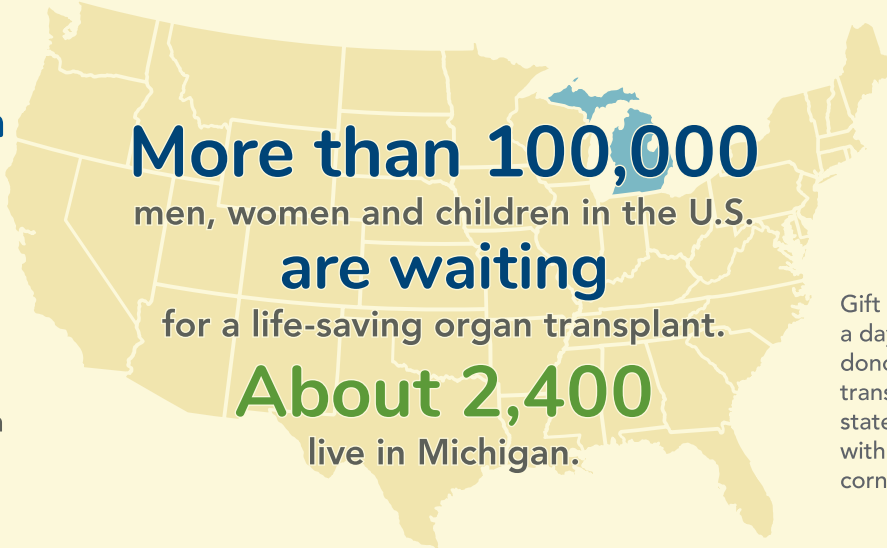
Gift of Life Michigan is the state's federally designated organ and tissue recovery program providing all services necessary for organ donation to occur. It works as the intermediary between families, hospitals and transplant centers to fulfill donation decisions for patients and their families.

Approximately

**4.5 million** Michigan adults have said



to saving lives by registering as organ and tissue donors.



Gift of Life works 24 hours a day as a liaison between donors, hospitals and transplant centers all over the state. Gift of Life also works with Eversight to manage cornea and eye donation.

There are no health requirements or age limits on

### Hope & Generosity

Anyone can register to be a donor!



Major religions support donation as an act of generosity and a gift of life.



It is a federal crime to buy or sell human organs and tissues in the U.S. (National Organ Transplant Act, 1984).



Gift of Life assumes all expenses related to organ and tissue donation. There is no cost to the family.



If you have **DONOR** ❤️ on your driver's license or state ID, you are registered.



Michiganders can register and have **DONOR** ❤️ printed on their driver's license or state ID when they apply for or renew them with the Michigan Secretary of State. Register online and you will be mailed a **DONOR** ❤️ sticker for your license or state ID.

Gift of Life maintains the Michigan Organ Donor Registry in partnership with the Michigan Secretary of State. The registry is a confidential database of state residents who have chosen to honor life through donation.



The first responsibility of medical professionals is to save lives. Donation is an option only after life-saving measures have failed.



**One** organ & tissue donor can donate **8** life-saving organs. Tissue can heal an average of **75** patients with the potential of **125**.

**CHECK YOUR HEART™**



**GIFT of LIFE**  
MICHIGAN  
ORGAN AND TISSUE DONATION



[golm.org](http://golm.org)